

Personal PR Strategies • Resolutions for Success

# *the* Crafts Report®

January 2014

The Business Resource for Artists and Entrepreneurs

**Rebecca Rose:**  
LADY OF THE RINGS

**2014**

HOT TRENDS &  
COOL BUSINESS TIPS

**Embracing  
the E-book  
Evolution**



>>> [www.craftsreport.com](http://www.craftsreport.com) • [facebook.com/CraftsReport](https://facebook.com/CraftsReport)



## Profitable Glass Etching

For over thirty years Armour Products has been supplying the Craft and Hobby Industries with an exclusive line of glass etching and mirror decorating products for crafters, professional artists, and home decorators.

Featuring our popular:

**Armour Etch®** Glass Etching Cream  
**Rub'N'Etch®** Ultra fine Etching Stencils  
**Over'N'Over®** The World's First Reusable Etching Stencils.  
**Sand Etch®** Mini Sandblaster



Our products are designed to give professional results right out of the box, without the need for expensive equipment, training, or artistic ability.



176-180 Fifth Avenue • Hawthorne, NJ 07506 USA  
 Phone: 973-427-8787 Fax: 973-427-8823  
[www.ArmourProducts.com](http://www.ArmourProducts.com)

# Artrider

SPRING • SUMMER • FALL  
2014

## CALL FOR ENTRIES

Spring **CraftMORRISTOWN**  
 Morristown, NJ • March 14-16

Spring **Crafts at LYNDHURST**  
 Tarrytown, NY • May 2-4

Fall **Crafts at LYNDHURST**  
 Tarrytown, NY • September 12-14

**HUDSON VALLEY Arts Festival**  
 Rhinebeck, NY • September 26-28

The NOV/DEC 2014 application for Crafts at Purchase, CraftWestport and Holiday CraftMorristown will be available in early 2014

**DEADLINE JANUARY 6**

[www.arttrider.com](http://www.arttrider.com)

[crafts@arttrider.com](mailto:crafts@arttrider.com) • 845.331.7900



## Calling all Artists!!!

Applications available soon for the  
**43rd Annual CHUN Capitol Hill People's Fair!**  
 Be part of a Colorado tradition and annual rite to summer!



Please visit [www.peoplesfair.com](http://www.peoplesfair.com) for application and information, or call 303-830-1651.

- \* An Arts & Crafts Festival, and Celebration of Community
- \* Denver, Colorado—June 7 and 8, 2014
- \* Juried show.
- \* 24-hour security.
- \* Booth sitters available upon request.
- \* Discounted parking in nearby garage with in-and-out privileges.
- \* Entry/booth fees: \$35/\$300.
- \* Exceptionally high attendance and community support.

The People's Fair is one of the region's largest outdoor festivals and is a community celebration! Annual attendance of roughly 200,000.







**Above:** Bill Ooms has developed the technique of incorporating thin layers of contrasting wood to the interior or exterior of wood boxes. Then he cuts through the contrasting layers with an ornamental lathe to create a pattern. "I've spent time developing techniques to add sterling silver to the work, such as my 'Black and Silver Egg,' shown here opened. Why? Because the sparkle of silver complements the reflected light from the faceted cuts in the wood. I'm working on techniques to include some silver filigree embedded into the surface of the wood." ([www.billooms.com](http://www.billooms.com))

# Trends: Glimpses of 2014





**Right:** As Holly Gage journeys into 2014, she hopes to continue “connecting and re-cording my slice-of-life moments through my jewelry.” Her “Scotland Fuchsia” is a way to translate memories of friendships made and the histories, traditions, and culture of the people who live there. Specifics: fine silver, 10mm Alexandrite, 3 inches x 3 inches ([www.hollygage.com](http://www.hollygage.com))



**Above:** Olympic Fever is coursing through Anne Bliss’s veins. In honor of the winter competition, she fashioned a new design, “Olympic Dreams,” inspired by the recognizable rings. “I plan to do more multi-circle jewelry in the future and play with design. I know it will evolve further as I discover new ways to connect them.” Specifics: recycled copper pipe, copper wire and chain, freshwater pearls, resin ([www.blissdesigns.net](http://www.blissdesigns.net))





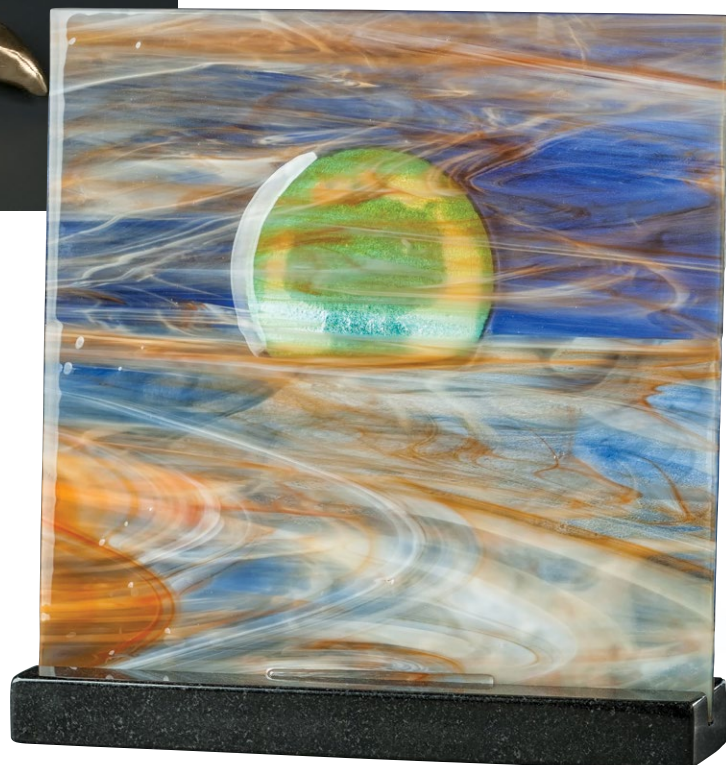


**Above:** In October 2014, Ginny Ruffner will have an exhibition at the Huntsville Museum of Art. It will feature sculptures from her well-received "Aesthetic Engineering Series." Shown here is the "When Lightning Blooms" sculpture, owned by the Corning Museum. "I intend to continue making metal and glass sculptures that pose questions about the unthought-of possibilities in genetic engineering." Specifics: stainless steel, bronze, and glass *Photo by Mike Seidl* ([www.ginnyruffner.com](http://www.ginnyruffner.com))

**Right:** Joy Scott's direction has been to expand the three-dimensional aspects of her designs while continuing to focus on color and texture. Her goal for 2014 is to expand further in that direction. "My best work is when I'm working on the edge of what's possible and never playing it safe." Specifics: art glass, fused glass ([www.coastalartglass.com](http://www.coastalartglass.com))



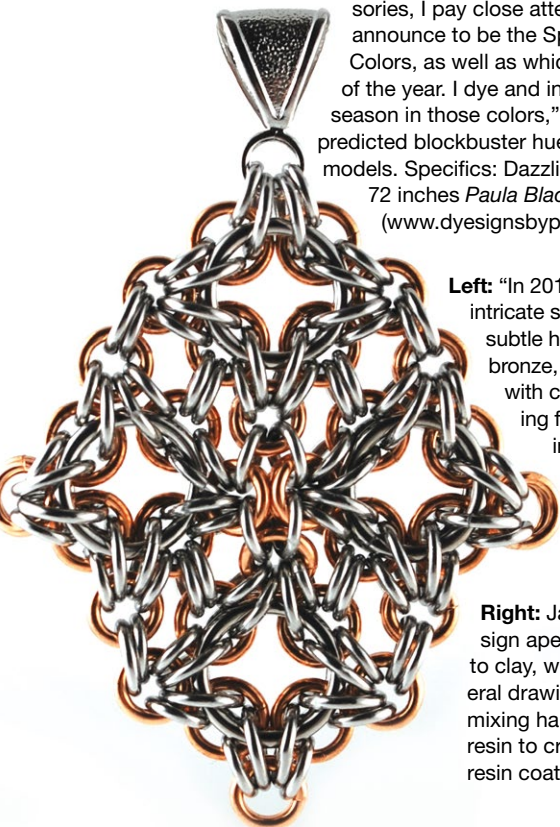
**Above:** For 2014 Angela Heim is busy expanding the notion of the "Mother's Ring." Her new Family Collection will include necklaces, rings, bracelets, and brooches all representing the family with birthstones and sentimental keepsakes, like baby teeth and locks of hair. The photographed wide-band ring represents six people in the family. "By adding brooches or bracelets or necklaces, the 'Family Collection' expands to include stepsiblings, aunts, uncles, and grandparents." ([www.angelaheim.com](http://www.angelaheim.com))







**Above:** "Having a business specializing in fashion accessories, I pay close attention to what the experts at Pantone announce to be the Spring and Fall Fashion Forecast Colors, as well as which color they declare to be the color of the year. I dye and introduce a line of scarves for each season in those colors," Pamela Mattei explains. One of its predicted blockbuster hues is Dazzling Blue, which Mattei models. Specifics: Dazzling Blue, floral pattern, 15 inches by 72 inches *Paula Blackwood/PBBlackwood Gallery LLC* ([www.dyesignsbypamela.com](http://www.dyesignsbypamela.com))



**Left:** "In 2014 I look forward to creating intricate structures defined by the subtle hues of stainless steel, copper, bronze, and brass. I've worked so much with color in the past decade, but I am looking forward to developing a collection of earthy industrial pieces, like 'Celtic Filigree Pendant,'" Rebeca Mojica reveals. Specifics: stainless steel, bronze chainmaille pendant (<http://rebecamojica.com>)



**Right:** Jami Miyamoto has taken doodling to a new design apex: "I take a lot of my doodles and translate them to clay, which is then cast in metal. It's making an ephemeral drawing more permanent." Miyamoto likes the notion of mixing hard metal with a soft look. "I'm exploring mixing metal and resin to create mini-collage art." Specifics: pewter with paper, beads, resin coating, 3 inches by 3 inches ([www.studioaroja.com](http://www.studioaroja.com))





**Left:** Jim O'Donnell created his "Ghost Vase" so it gives the appearance of being a ghost. According to the artist, "The top, middle, and base are present in the form for the viewer to finish the design, but it also requires the viewer to place the beautiful red rose inside. I will continue to explore variations of this minimalist concept in 2014." Specifics: Gabon ebony, maple veneer, carbon fiber rods, finished with sprayed (satin finish) conversion varnish *Photo by Margaret Lanier* ([www.vaseturner.com](http://www.vaseturner.com))